



# DGF

IMPACT DEGERMINATOR



**Economic and compact machine that guarantees the maximum yield in the dry maize degermination process.**

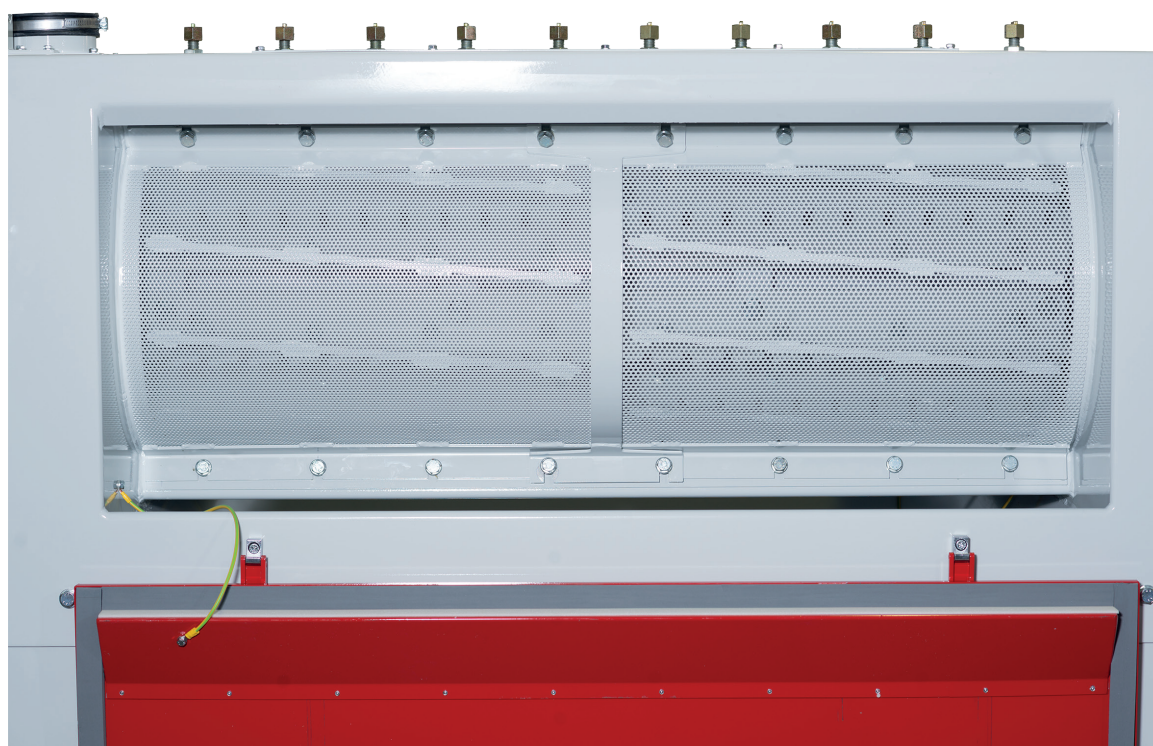
The impact degerminator is characterized by:

- Electro-welded sheet steel structure
- Special alloy steel rotor mounted on spherical roller bearings
- Stainless steel advancing blades designed to efficiently crush kernels and smooth the product
- Perforated sheet steel screens with square-shape impact bars are arranged in a spiral

The performance of DGF can be optimized thanks to the possibility of varying the retention period of the product inside the machine by adjusting the advancing baffles positioned on top of the machine. Also, the machine permits dry degermination of maize eliminating the need for a drying system.

The DGF is employed to obtain top-quality germ, maximum concentration of carotene in grits as well as best semolinas and flours for polenta.

Excellent production of brewery grits and grits for snack foods at low operating cost.

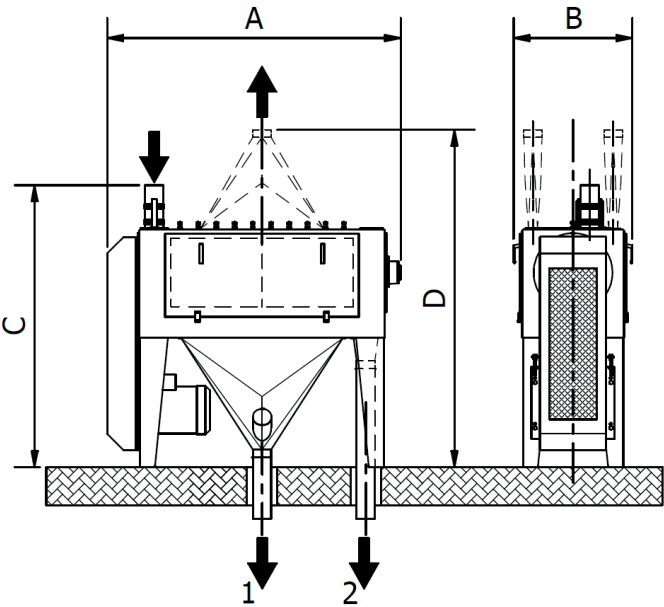


Technical Information

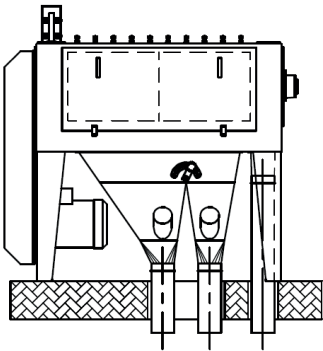
Model	Dimensions (mm)				Maximum capacity (T/h)	Installed power (kW)		Net weight (Kg)	Shipping volume (m³)
	A	B	C	D		50 Hz	60 Hz		
DGF 452	1933	782	1855	2221	3.6	7.5	8.6	600	5.9
					5.4	11	12.6	620	

Technical features of the equipment can be modified without any obligation of notice. Data may be not fully in accordance with the market versions.

Version with single hopper



Version with double hopper



- 1. Discharge fine-medium grits
- 2. Discharge coarse grits



OCRIM S.p.A. - Via Massarotti, 76 - 26100 Cremona (Italy)



[www.ocrim.com](http://www.ocrim.com)