



FKC/B

LOW PRESSURE AIR FILTER

Suitable for a wide range of applications, providing high efficiency even under the most difficult conditions.

The cylindrical design, ideal for high vacuum application, allows high filter efficiency and the 360° orientation of the air inlet and outlet spouts. FKC/B allows to improve filter capacity by the cyclonic effect which is caused by the tangential air inlet. Thanks to the cyclonic effect, dust particles are pre-decanted by centrifugation.

The filter contains vertically suspended needle felt filter sleeves. This type of sleeves is suitable for the fine dust abatement.

The upper part of the filter is composed of: cleaning air receiver tank, clean air outlet and filter sleeve cleaning jets. The dusty air tangentially enters into the cylindrical central body of the filter where filter sleeves are located. Through this cylindrical central body of filter is possible to access to the maintenance doors.

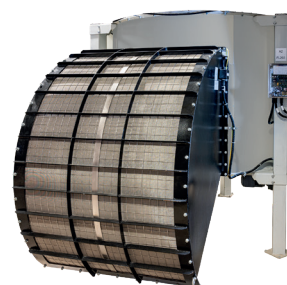
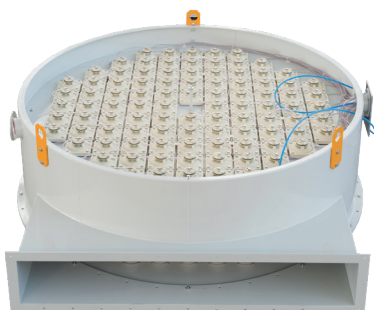
Filter sleeves cleaning is carried out by the use of low pressure jets. These air jets, injected through nozzles with membrane valves, cause fabric strong shaking separating the adhering dust from the sleeve fabric weave.

Each cleaning membrane valve is pneumatically controlled by membrane valve pre-commanding, applied on the principal membranes.

The correct operating sequence of the pilot valves is due to an electronically timed multi-entry distributor with which it is possible to regulate the duration of the action and the frequency of the intervention.

Optionals:

- Antistatic cloth filtering sleeves
- Sleeves quick release device
- Explosion relief device with or without safety stop control, also in ATEX version
- Open-top version for extension sleeves from above
- Anti-explosion panels for an active flame suppression



Executions:

- With right or left air inlet volute
- With conical hopper or dust sweeper with motorized trap
- Variable height filter through spacers
- Positioning on legs or through floor opening

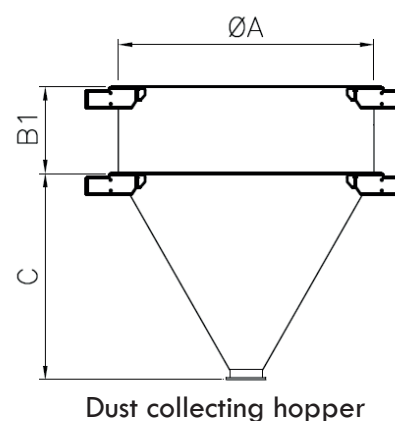
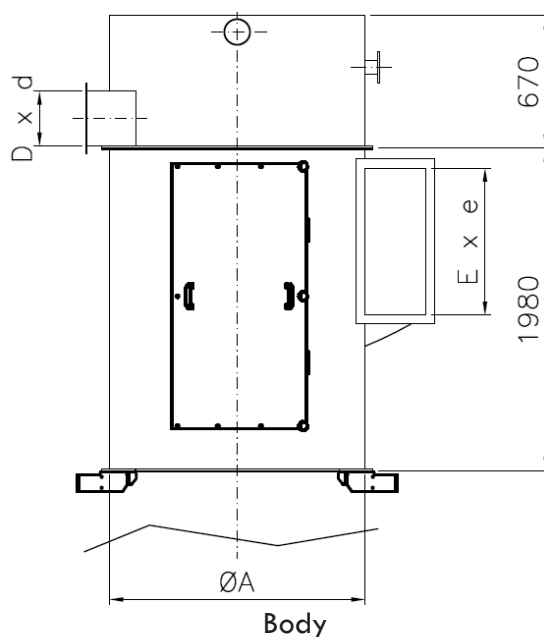
Technical information

Model		Filtering area	Dimensions (mm)							Filter bags			Net weight		Shipping volume	
			ØA	B		C	Dxd	Exe	F		Lenght	Purge air	C/w hopper	C/w sweeper	C/w hopper	C/w sweeper
FKC/B 12	25	11.3	900	490	990	1050	280x 280	390x 200	364	12	2500	8-10	390		6.90	
	30	13.5		990	1490						3000	10-12	425		7.90	
FKC/B 24	25	22.6	1100	490	990	1300	520x 280	600x 250	364	24	2500	15-20	570		8.40	
	30	27		990	1490						3000	18-24	630		9.60	
FKC/B 36	25	33.9	1300	490	990	1550	800x 280	750x 310	364	36	2500	22-30	970	1190	10.40	12.90
	30	40.6		990	1490						3000	27-36	1040	1260	11.60	14.70
FKC/B 56	25	52.7	1600	490	990	2000	1150 x280	850x 400	370	56	2500	35-46	1355	1620	15.80	19.10
	30	63.2		990	1490						3000	42-55	1445	1710	17.90	21.80
FKC/B 72	25	67.8	1750	490	990	2100	1450 x280	1000 x450	370	72	2500	44-59	1467	1787	22.70	20.00
	30	81.3		990	1490						3000	53-71	1587	1907	25.20	22.50
FKC/B 96	25	90.4	2100	490	990	2600	1750 x280	1150 x550	370	96	2500	59-79	2225	2650	29.40	26.20
	30	108.4		990	1490						3000	71-95	2365	2770	31.90	29.30
FKC/B 120	25	113	2300	490	990	2800	1750 x280	1390 x550	370	120	2500	74-99	2850	3380	33.60	30.00
	30	135.6		990	1490						3000	89-119	3030	3640	37.00	33.80
* Related to machine type 1 (version with hopper)																
** Related to machine type 2 (version with sweeper device)																

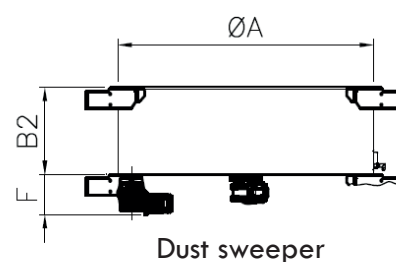
* Related to machine type 1 (version with hopper)

** Related to machine type 2 (version with sweeper device)

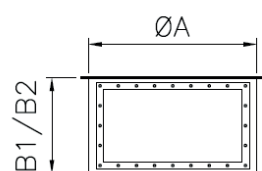
Technical features of the equipment can be modified without any obligation of notice. Data may be not fully in accordance with the market versions.



Dust collecting hopper



Dust sweeper



Explosion relief panel





OCRIM S.p.A. - Via Massarotti, 76 - 26100 Cremona (Italy)



www.ocrim.com