



**IDA**

INFESTATION DESTROYER



**Specifically designed to prevent infestation in the flour. Destroys by impact possible insect eggs present either in wheat and/or flour.**

The machine disinfests by impact all types of wheat in the cleaning section, and/or flours, before storage and/or bagging.

The incoming product, by means of an internal cone, is uniformly spread on the pinned rotor surface. The combined impact among the pins of the rotor and the internal corrugated surface of the stator, in special profile cast iron, guarantees the elimination of hidden infestation.

The rotating speed of the rotor is available according to the type of product to be processed.

The machine can be installed both on pressure lines and on gravity spouting.



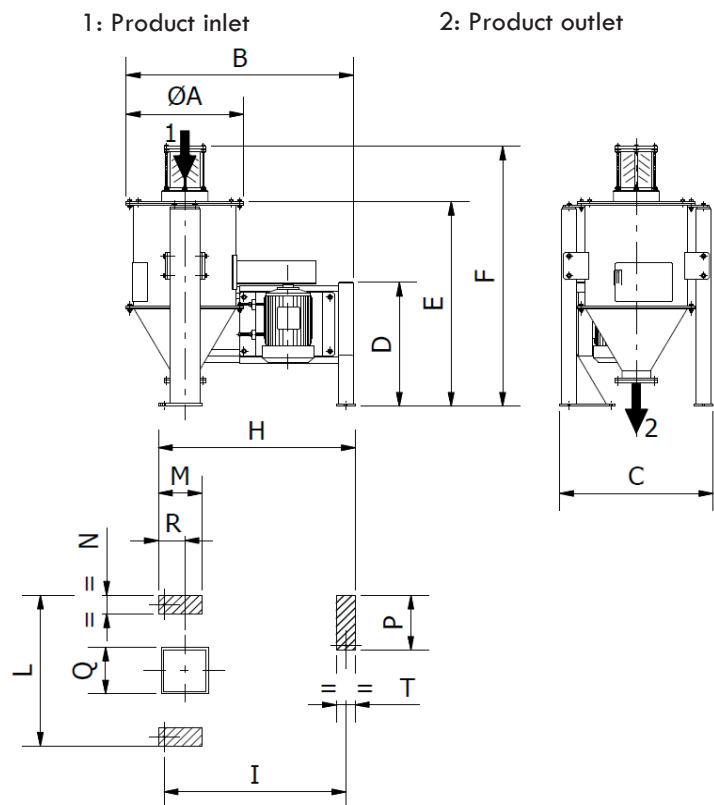
## Technical information

| Model          | Dimensions<br>(mm) |      |      |      |      |      |      |      |      |     |     |     |     |     |     |
|----------------|--------------------|------|------|------|------|------|------|------|------|-----|-----|-----|-----|-----|-----|
|                | A                  | B    | C    | D    | E    | F    | H    | I    | L    | M   | N   | P   | Q   | R   | T   |
| <b>IDA 370</b> | 620                | 1200 | 810  | 665  | 1100 | 1396 | 1040 | 960  | 710  | 230 | 100 | 295 | 250 | 140 | 120 |
| <b>IDA 660</b> | 940                | 1645 | 1170 | 850  | 1450 | 1746 | 1345 | 1255 | 1050 | 270 | 120 | 350 | 300 | 160 | 120 |
| <b>IDA 950</b> | 950                | 2290 | 1501 | 1150 | 1805 | 2191 | 1827 | 1687 | 1381 | 280 | 120 | 350 | 360 | 170 | 220 |

| Model   | Rotor<br>(mm) | Maximum capacity<br>(t/h) |                   |       | Motor power<br>(kW) |       | Empty mass<br>(kg) | Shipping<br>volume<br>(m³) |
|---------|---------------|---------------------------|-------------------|-------|---------------------|-------|--------------------|----------------------------|
|         |               | Flour                     |                   | Wheat | 50 Hz               | 60 Hz |                    |                            |
|         |               | Gravity feed              | Blow-thru<br>feed |       |                     |       |                    |                            |
| IDA 370 | 370           | 1,5                       | 1,7               | 9,0   | 4                   | 4,6   | 230                | 1,8                        |
|         |               | 3,5                       | 3,9               | 12,5  | 5,5                 | 6,3   | 240                |                            |
|         |               | 5,5                       | 6,1               | 17,0  | 7,5                 | 8,6   | 254                |                            |
|         |               | 7,0                       | 7,7               | 25,0  | 11                  | 12,6  | 275                |                            |
| IDA 660 | 660           | 8,0*                      | 8,7*              | -     | 15                  | 17,3  | 760                | 4,4                        |
|         |               | 10,0*                     | 11,7*             | -     | 18,5                | 21,3  | 835                |                            |
|         |               | 13,8*                     | 14,4*             | -     | 22                  | 25,3  | 850                |                            |
|         |               | 15,9*                     | 18,0              | -     | 30                  | 34,5  | 910                |                            |
|         |               | 21,0*                     | 22,5*             | -     | 37                  | 42,5  | 970                |                            |
| IDA 950 | 950           | 30,0                      | 33,0              | -     | 55                  | 63    | 1875               | 9                          |
|         |               | 40,0                      | 44,0              | -     | 75                  | 86    | 2000               |                            |

Technical features of the equipment can be modified without any obligation of notice. Data may be not fully in accordance with the market versions.

\* Values to be agreed with UTD and UTC departments.





OCRIM S.p.A. - Via Massarotti, 76 - 26100 Cremona (Italy)



[www.ocrim.com](http://www.ocrim.com)