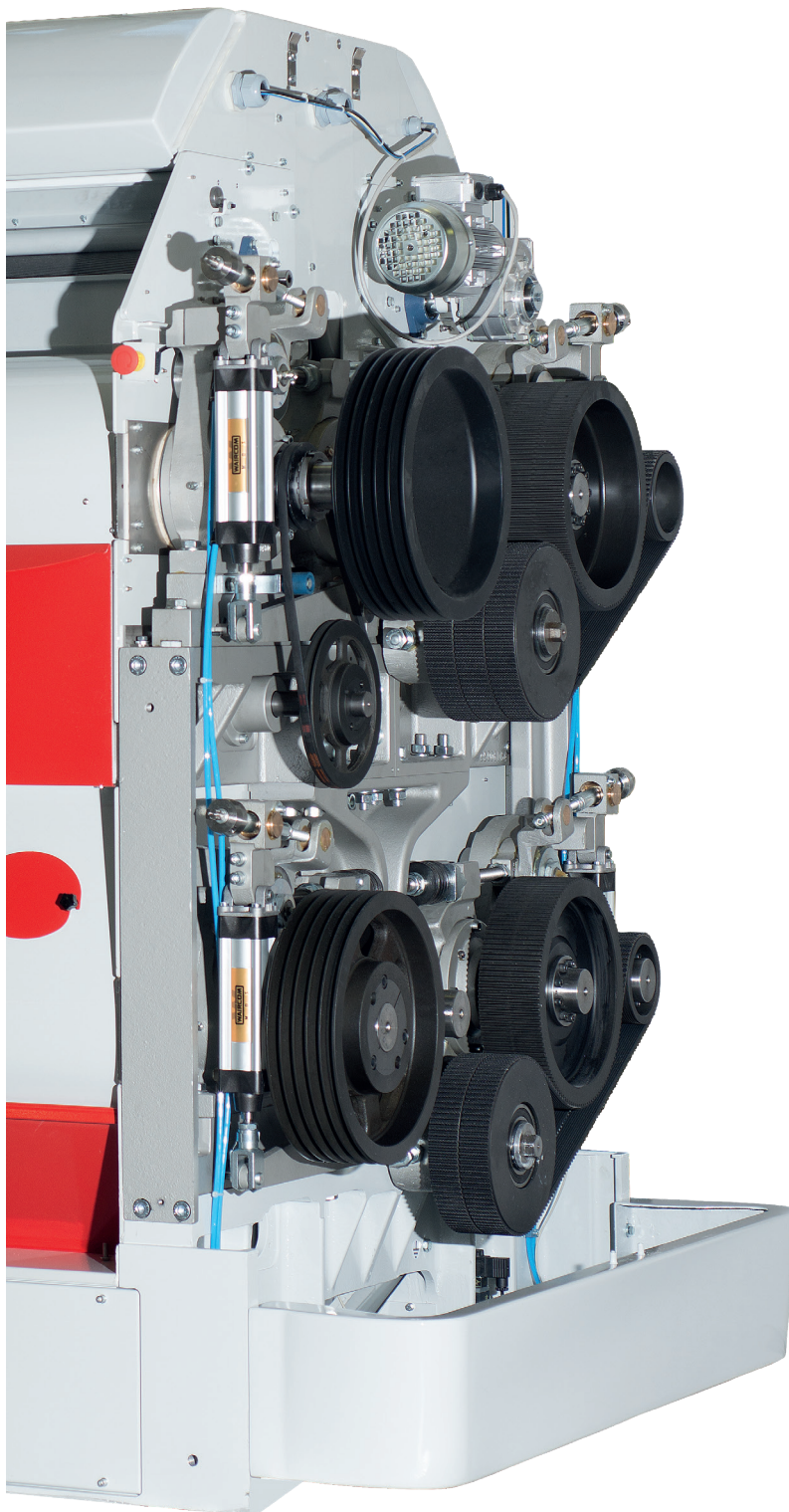




RMI/Q

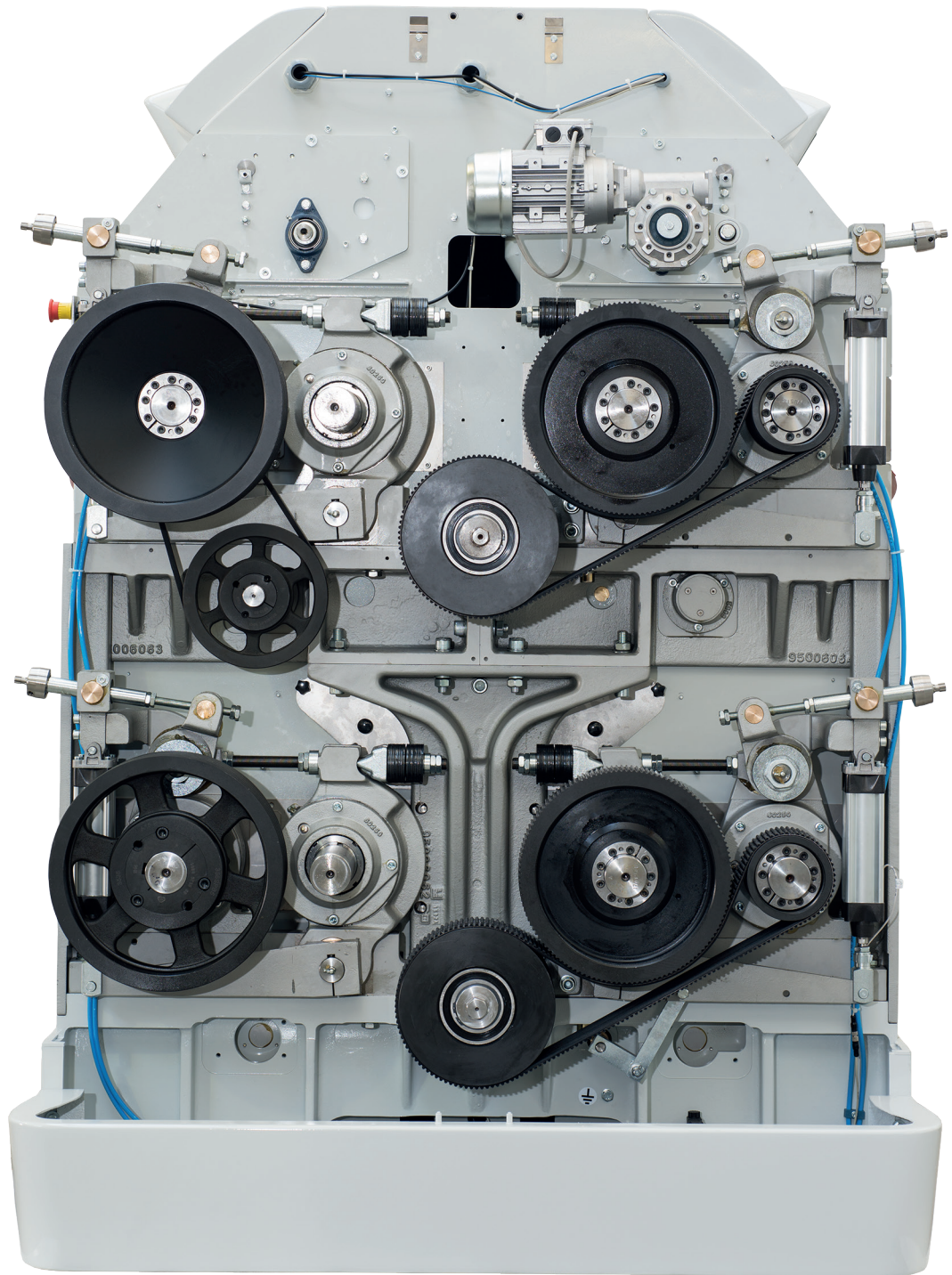
DOUBLE ROLLERMILL



The combination of four concepts: simplicity, reliability, competitiveness and made-in-Italy.

The result is a machine where the innovation and the development are together in the production process.

The concepts of this new roller mill are the same of RMX/Q, sturdy and reliable with an industrial engineering work to offer a machine at maximum levels.



Basement

A sturdy structure designed for a loading generated by a double rollermill. The basement is made in cast iron on which rest rolls pack, independent and easily removable.

Frame

Carbon steel structure carried out by laser cut and robotized welding. The painting with more passages foresees the use of certified food grade products.



Feeding group

Extractable independent module, equipped with direct drive gearmotor on the feeding roll, driven by an on-board inverter. Bearings and support group of commercial type for easier and shorter maintenance.

Rolls pack

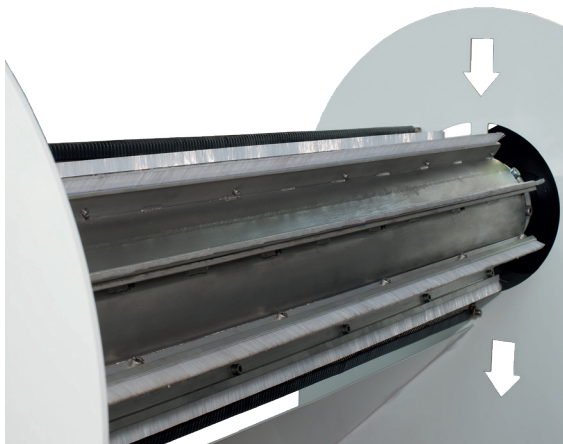
The mechanic, the dimensions and the materials are the same that have made the RMX/Q famous worldwide.

The reliability has been further improved by increasing the dimensions of the horizontal beam and by strengthening the fork of the mobile support. The rolls pack is equipped with extraction rolling guides, making it compact and easily removable. The belt transmission system with special double profile (Ocrim patent) and the roll engagement pneumatic actuator, synonymous of quality and sturdiness, are re-proposed also in this version.

Sifting system

A centrifugal sifting unit (Ocrim patent), placed between the rolls assemblies, optimizes product load on the lower grinding rolls and makes the RMI/Q the unique rollermill in the market. Upon request, it is possible to install sifting group also after the couple of final rolls.

The product extracted from the sifting unit can be conveyed in the same sifter channel of the lower rolls or in a specific channel for finer products.



Electronics

All the electric and electronic part is entirely positioned in the upper compartment, seal, suitable for the control and running of the whole machine also through an auto-calibrating probe inserted in the feed tube.

One only button for immediate stop of the machine in case of emergency stop.

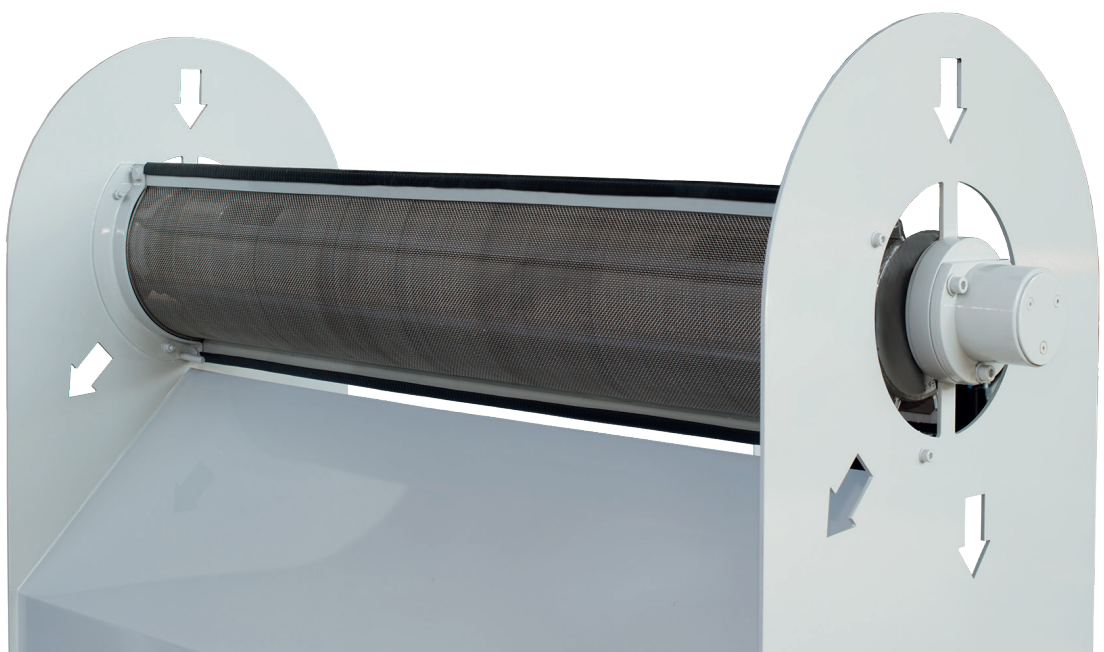
Becklit screen with multi-function switches for a simple running of the machine.

Option

It is provided as an option the revolutions electronic control of the grinding rolls.

Maintenance

The RMI/Q reflects the sanitation solutions of the RMX/Q.



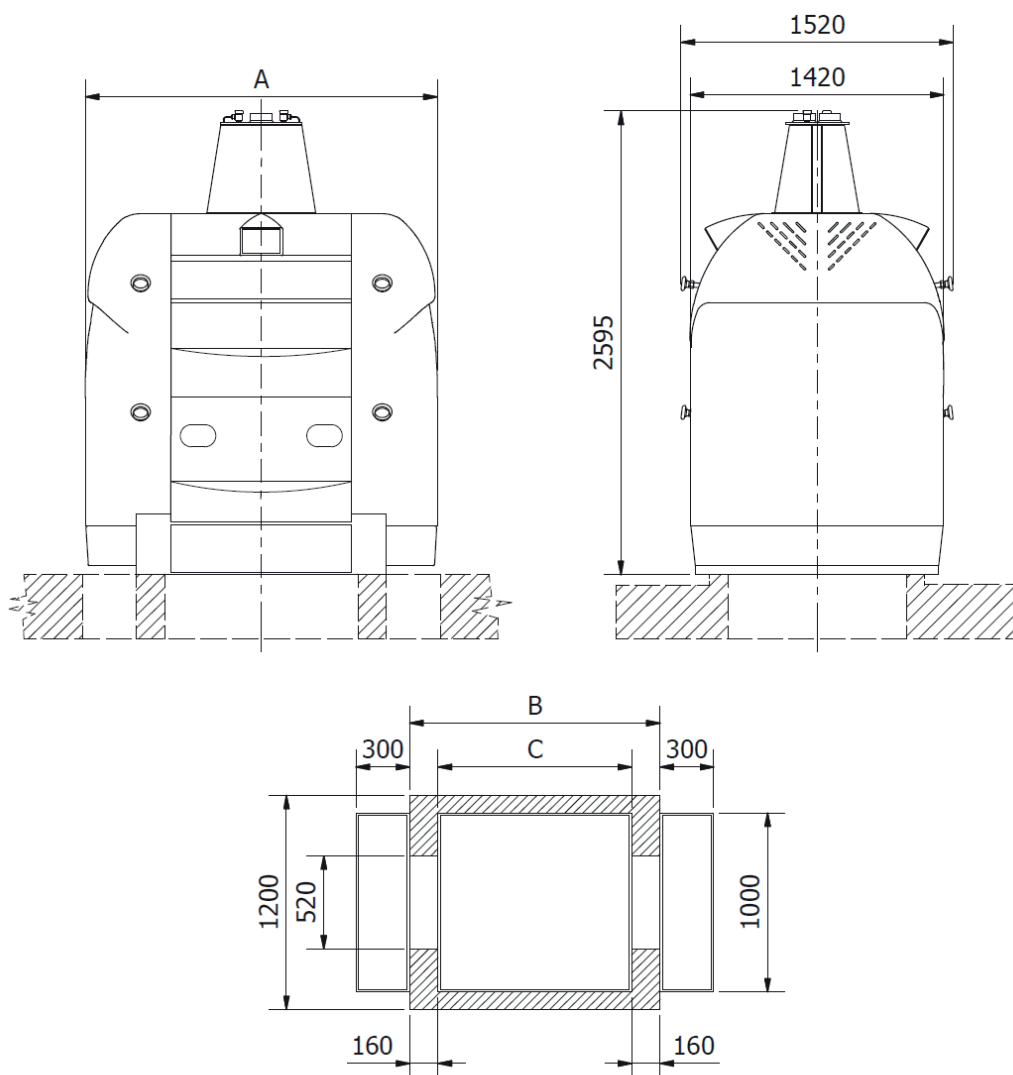


Technical information

Model	Dimensions [mm]			Roll Dimensions [mm]		Maximum capacity* [t/h]	Maximum installed power [kW]			Net Weight [kg]	Shipping volume [m³]
	A	B	C	Ø	Length		Motor		Gear Motor		
							50 Hz	60 Hz			
RMI 100Q	1980	1400	1080	250	1000	7.5	37	45	0.55	5970	9.8
RMI 125Q	2230	1650	1330	250	1250	9.5	37	45		6750	10.8

*Referred to only one passage type B1 – Product type: wheat

Technical features of the equipment can be modified without any obligation of notice. Data may be not fully in accordance with the market versions.





OCRIM S.p.A. - Via Massarotti, 76 - 26100 Cremona (Italy)



www.ocrim.com