



SFI/M

MODULAR PLANSIFTER



Modular concept that foresees the possibility to have up to 10 channels with a dedicated central frame, where standardized cabins can be fixed to. Working capacity on B1 is 8 t/h for each channel, only one 10 channels SFI/M may be utilized for a 190 t/24hrs flour mill.

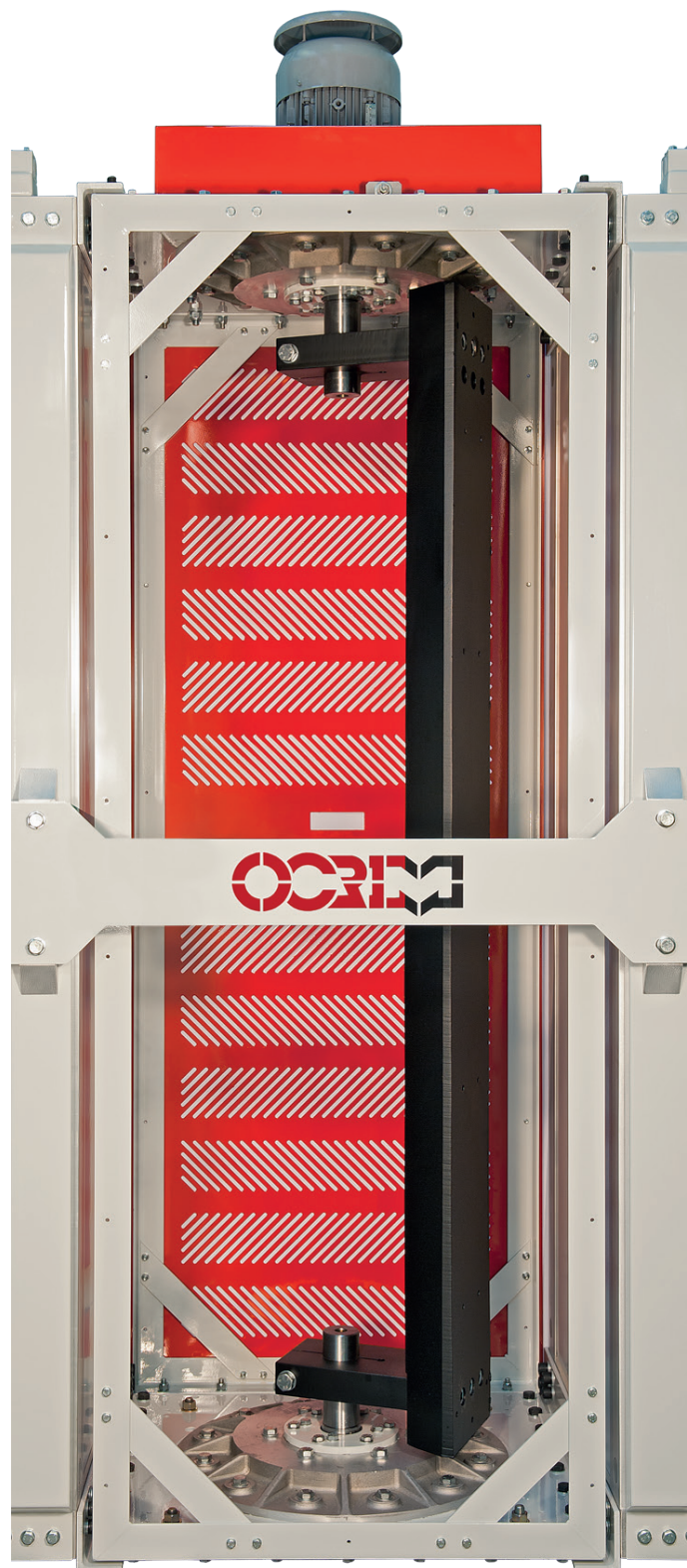


Cabin

The core frame is constructed of high resistance aluminium alloy, deriving from aero-space design concepts. The 4 aluminium extruded columns and the two head castings are assembled with bolted joint system and using high resistance elements.

The sieving elements are supplied in plastic polymer food-grade, with aluminium alloy frame. It is possible to supply in option antimicrobial or wood sieves. Each sifting channel has a pair of double screw which operates pressure clamping devices for uniform sieve locking and easy cleaning.

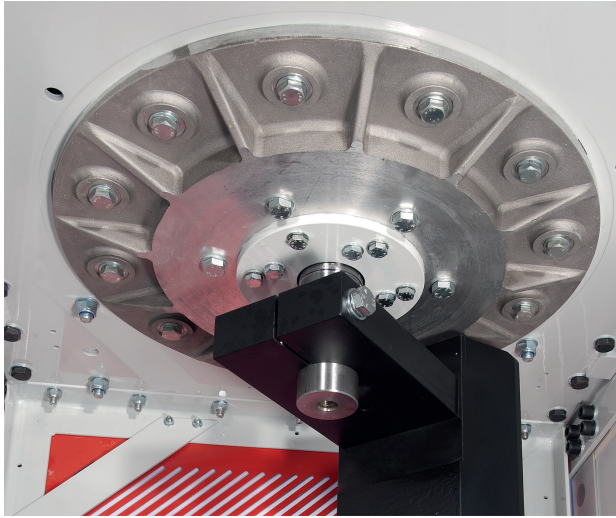




Central frame

The driving module is constructed with aluminium and steel parts, assembled by means of high resistance bolting junctions.

It is all inserted in a light steel central structure which is flexible and resistant at the same time.



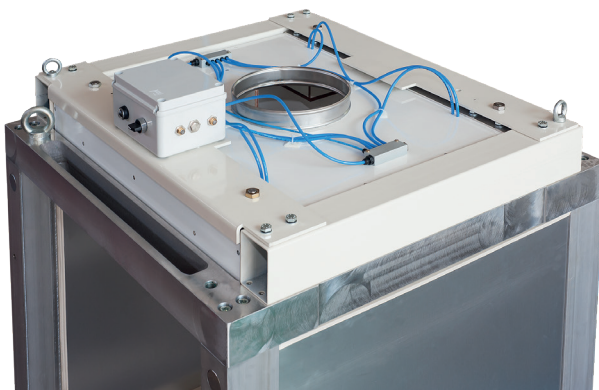
Care of the particulars

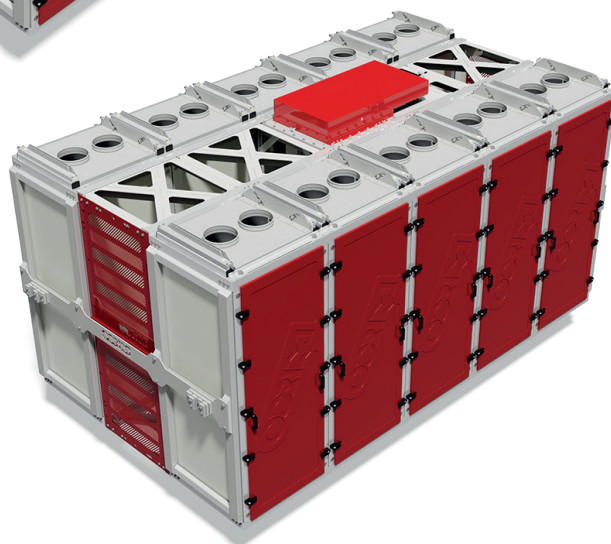
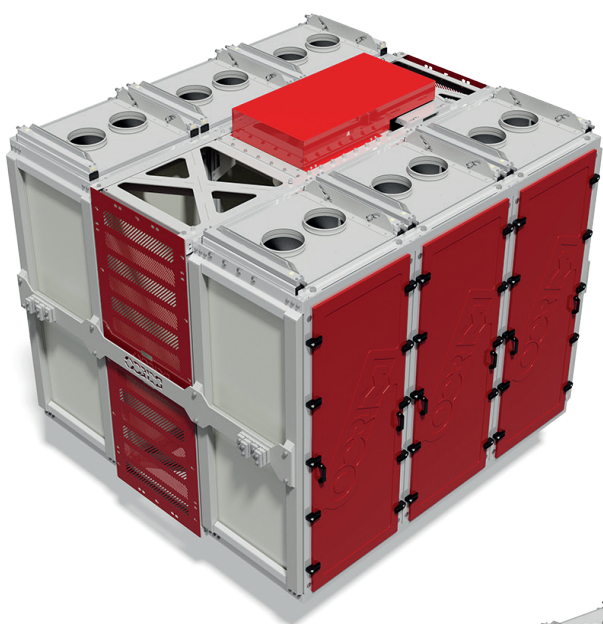
All the materials in contact with the product are “food-grade” certificated and tested to guarantee the maximum result. The channel blocking pieces have been equipped with a new fixing system that allows quick disassembly, both for cleaning and re-scheming scopes. The cabins are available as “sandwich panels” polystyrene fiberglass or also stainless steel panels, and guarantee the necessary insulation to avoid condensation formation also in passages where the temperature and moisture conditions are critical. The insulated doors, on top of guaranteeing the necessary insulation, also provide an aesthetically pleasing design and elegant touch to the machine.



Sieves tensioning device

In option, it is available the automatic sieves tensioning device. It is totally pneumatic and doesn't require electrical equipment. The locking and slackening of the sieves pack, into the cabin, is done by acting on the selector located above each door. The pressure state can be viewed thanks to a colored indicator. The sieves tensioning device ensures speed, ease of use and constancy of the retaining force, regardless of the felts relaxation present into the sieves, guaranteeing upstream the pressure stability. The sieves press top device is interchangeable with the manual system upon the covers replacing.





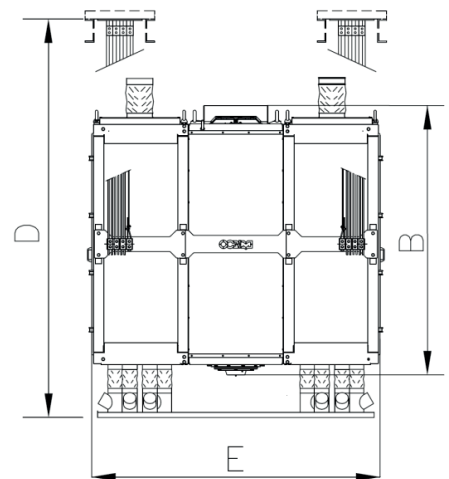
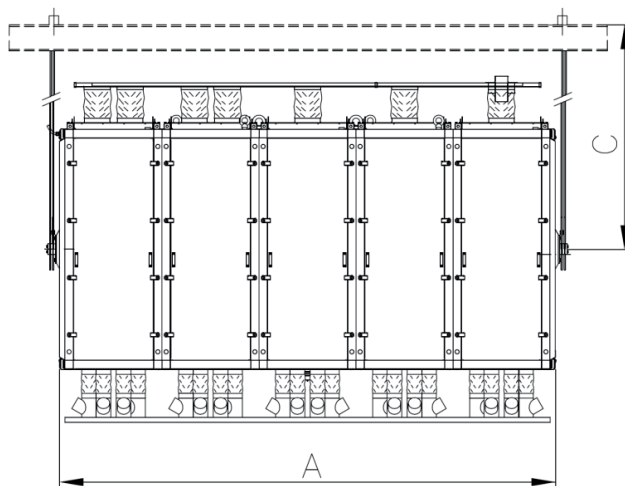
Technical Information

Model	Dimensions [mm]					Single section capacity B1 ** [t/h]	Sections [n°]	Sieves per section [n°]	Net sifting surface [m ²]	Motor-Installed power [kW]		Net weight [kg]	Package volume [m ³]
	A	B	C*	D	E					50 Hz	60 Hz		
SFI/M 023	1018	2580	2115	3800	2768	8	2	30	25,65	3	3,5	1500	15,6
SFI/M 043	1936	2580	2115	3800	2768	8	4	30	51,30	5,5	6,6	3500	15,7
SFI/M 063	2854	2580	2115	3800	2768	8	6	30	76,94	7,5	8,6	4500	21,6
SFI/M 083	3772	2580	2115	3800	2768	8	8	30	102,59	11	12,6	7050	27,6
SFI/M 103	4694	2580	2115	3800	2768	8	10	30	128,24	11	12,6	7550	33,5

* minimum height

** Based on soft wheat

Machine technical features can be modified without any obligation of notice. Data may not be fully in accordance with the commercialized versions.



OCRIM



OCRIM S.p.A. - Via Massarotti, 76 - 26100 Cremona (Italy)



www.ocrim.com