

**ST**  
AIRLOCK

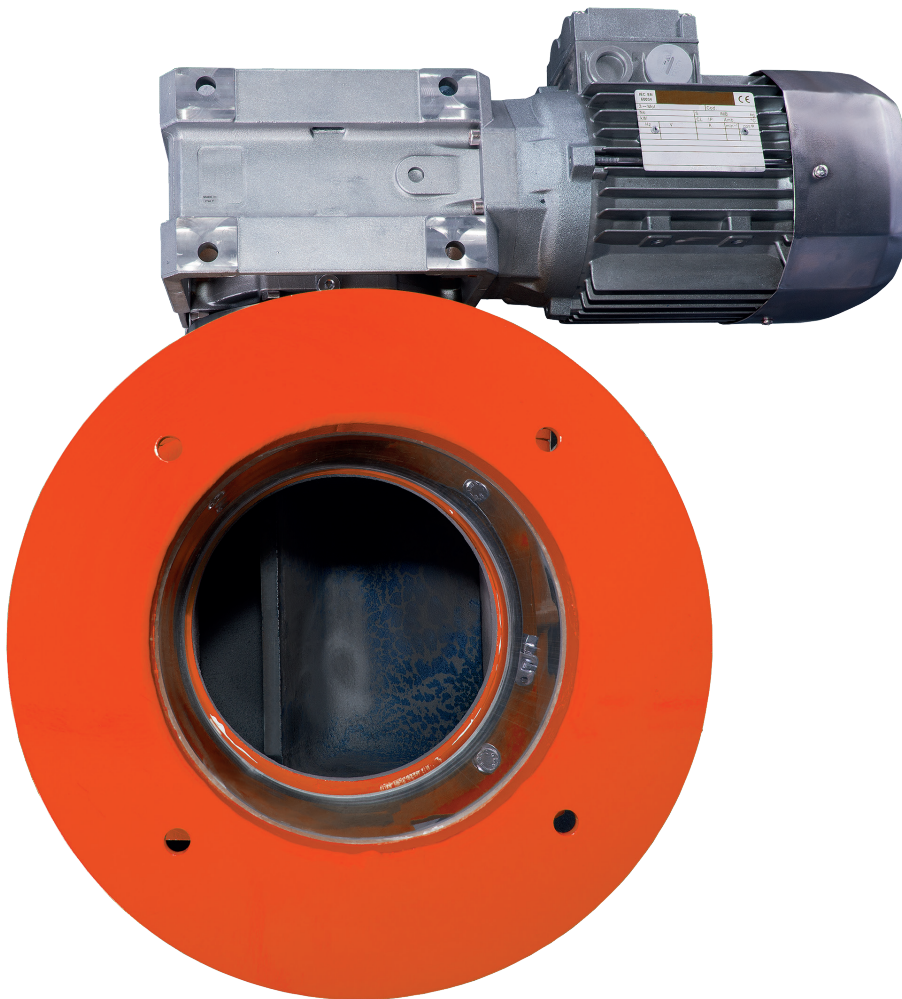


**The airlock is a rotary device which uses the gravity principle to transfer stock between two environments with different pressures.**

It is characterized by:

- Cast iron construction body and impeller for a perfect air tight. The impeller is mounted on ball bearings.
- Sight glass unit installed at the product inlet to allow the inspection of product incoming.

The airlocks can be gathered together in series and connected by means of couplings.

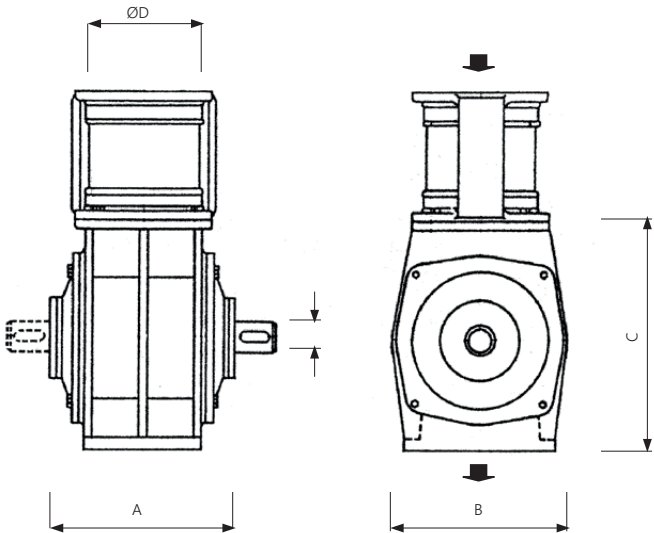


Technical Information

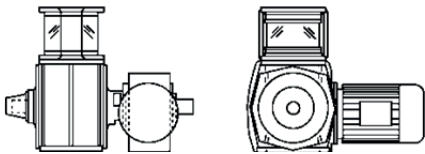
Model	Dimensions mm.				Maximum Capacity* T/h		Drive arrangement 50Hz (60Hz) kW				Net weight Kg	
	A	B	C	Ø D	Flour	Bran	Single	Battery-connected (N° of unit)				
					γ = 550 kg/m³	γ = 350 kg/m³		1-2	3-4	5-6	7-8	
ST 20/3	285	228	300	135	4	2,5	0.75÷1.5	0.75 (0.9)	1.1 (1.3)	1.5 (1.8)	2.2 (2.6)	45
ST 28/9	290	320	335	169	9,7	6,1						60
ST 30/15	384	345	380	210	17,8	11,3						95

\* with 45 R.P.M. of maximum rotation and 80% filling

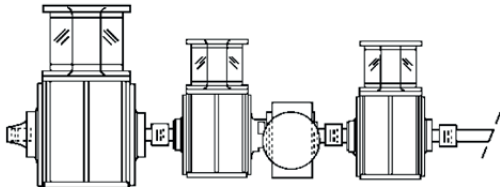
Technical features of the equipment can be modified without any obligation of notice. Data may be not fully in accordance with the market versions.



SINGLE DRIVE UNIT



BATTERY DRIVE UNIT





OCRIM S.p.A. - Via Massarotti, 76 - 26100 Cremona (Italy)



[www.ocrim.com](http://www.ocrim.com)